

AMORA HOTEL  
RIVERWALK MELBOURNE



FACT SHEET





## AMORA HOTEL RIVERWALK MELBOURNE



### AMORA HOTEL RIVERWALK MELBOURNE

A picturesque setting overlooking the Yarra River sets the tone for this stylish boutique hotel. Built around a spacious central courtyard, Amora Hotel Riverwalk Melbourne takes full advantage of its charming park and river surroundings. The Hotel is ideally located within the popular Bridge Road shopping, restaurant and bar precinct.

#### GUEST ROOMS

Amora Hotel Riverwalk Melbourne has 111 beautiful guest rooms and suites including

- 41 Deluxe Courtyard Queen Rooms
- 2 Deluxe Courtyard Disabled Rooms (1x Queen, 1x King/Twin)
- 7 Deluxe Courtyard Twin Rooms (King Zip)
- 10 Superior Courtyard King Rooms
- 19 Superior King Spa Rooms\*
- 19 One Bedroom Loft Apartments\*
- 12 Superior Riverview Spa Suites
- 19 Superior two bedroom, two bathroom Townhouse Apartments
- A two bedroom Presidential Apartment:

\*These two spaces can interconnect to create the two bedroom townhouse apartments.

#### ROOM FACILITIES

- Tea and coffee making facilities
- Mini bar
- Broadband Internet
- Telephones with charging docks
- Hair dryer
- In-house pay per view movies
- Iron and ironing board
- LCD TV's with Foxtel
- Most rooms have balconies or opening windows
- Pillow menu
- In room safe

#### FOOD AND BEVERAGE FACILITIES

##### ■ Fresco Dining

Serving contemporary Australian cuisine, the restaurant offers patrons the choice of indoor or al fresco dining in the garden courtyard. With an excellent a la carte menu, the restaurant is open seven days for breakfast, lunch and dinner.

##### ■ Tracks Bar

Reflecting the history of our location as the Cable Tramways depot, the bar offers a casual and relaxed atmosphere in which to sample a wide range of local and international beers and wine. A Tapas menu is also available throughout the day until 10pm. The bar is open Monday - Friday from 7.00am and Saturday from 4.00pm.

### HOTEL FACILITIES

Amora Hotel Riverwalk Melbourne offers guests the following hotel facilities:

- Guest laundry and valet service
- 24 hour reception
- 24 hour room service
- High speed internet available
- Undercover security parking (Charge applies)
- Car charging stations available
- Business centre
- Complimentary mountain bikes
- Jogging and cycling tracks located nearby
- Pool/Gym off site

#### CONFERENCE FACILITIES

Amora Hotel Riverwalk Melbourne has eight purpose built function rooms and can cater for up to 220 people using a range of conference configurations. Our unique central courtyard marquee is available for lunches, dinners and cocktail events and can be transformed into the perfect setting for weddings.

#### LOCAL ATTRACTIONS

Located only 3.5km's from the Melbourne CBD, Amora Hotel Riverwalk Melbourne provides easy access to a number of local attractions.

These include:

- Bridge Road shopping precinct
- Crown Casino
- Melbourne Cricket Ground (MCG)
- Yarra River
- Queen Victoria Markets
- Melbourne Park
- Victoria Gardens & IKEA
- Fosters Brewery
- Mountain Goat Brewery

#### HOW TO GET HERE

Amora Hotel Riverwalk Melbourne is approximately 35 minutes' drive from Melbourne Airport via the M1 freeway.

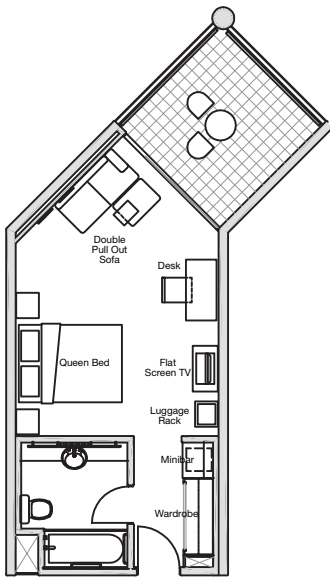
By Tram to/from the City: 48 or 75 Tram line runs along Bridge Road, the hotel stop is #22.

649 BRIDGE ROAD,  
RICHMOND VIC 3121 AUSTRALIA  
T +61 3 9246 1200 / 1800 339 436  
F +61 3 9246 1200  
E [res@amora.melbourne](mailto:res@amora.melbourne)  
W [melbourne.amorahotels.com.au](http://melbourne.amorahotels.com.au)

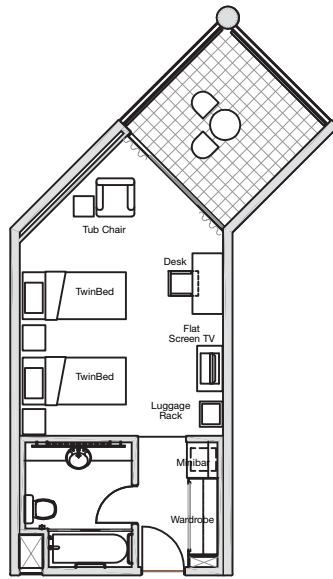


# AMORA HOTEL

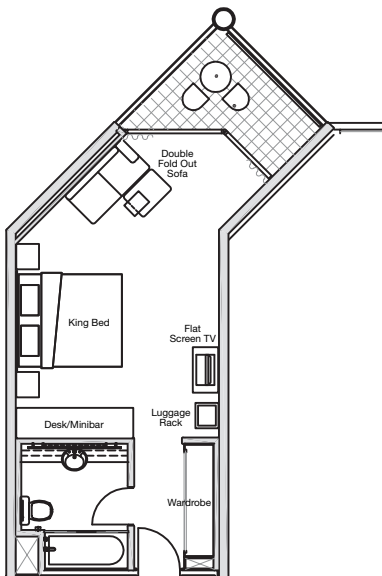
RIVERWALK MELBOURNE



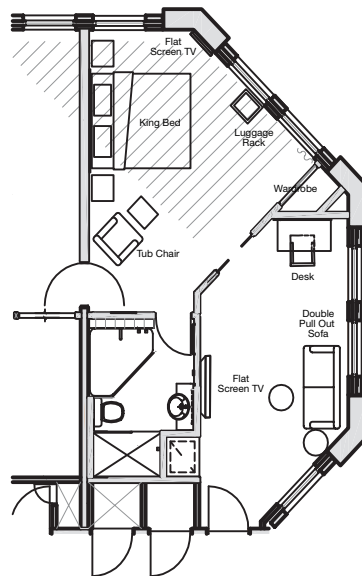
**Deluxe Courtyard Queen**  
32 Square Metres



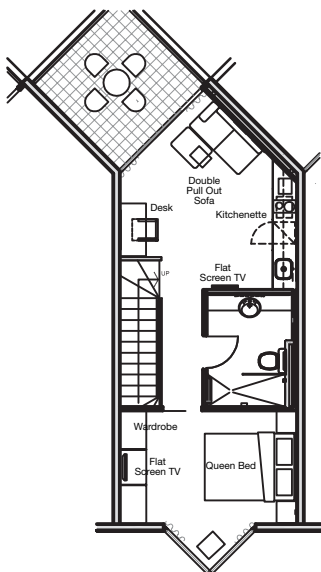
**Deluxe Courtyard Twin**  
32 Square Metres



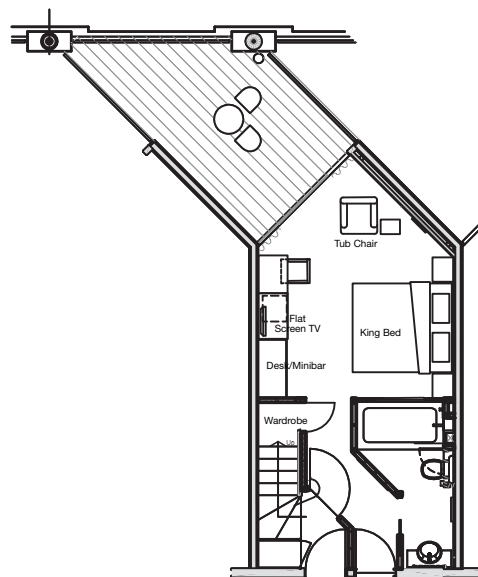
**Deluxe Courtyard King**  
34 Square Metres



**Superior Riverview Spa Suite**  
43 Square Metres

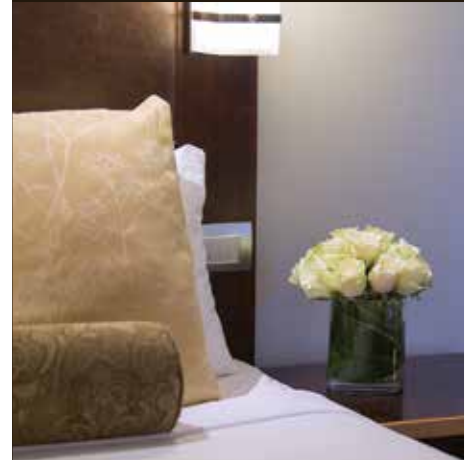


**One Bedroom Loft Apartment\***  
36 Square Metres



**Superior King Spa Room\***  
27 Square Metres

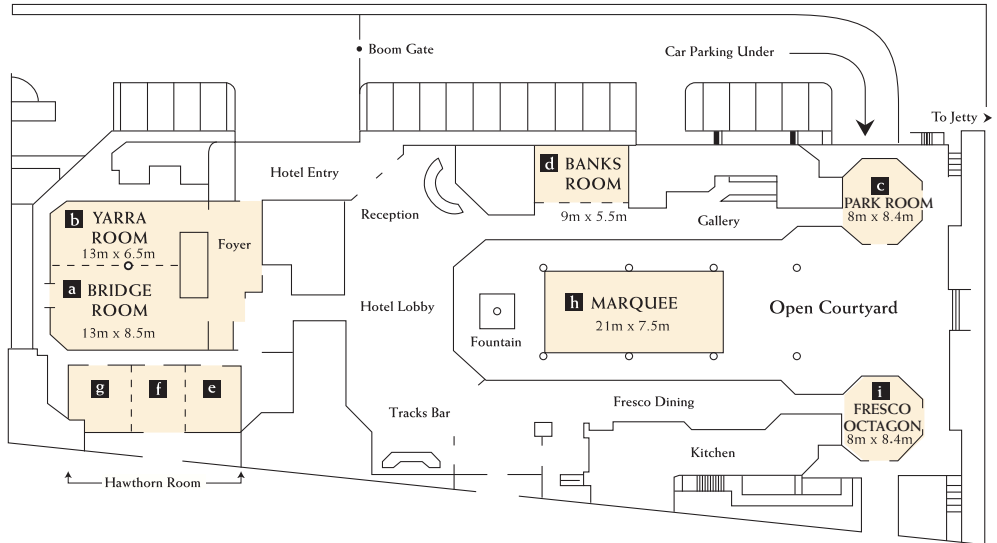
\*These two spaces can interconnect to create the two bedroom townhouse apartments.





# AMORA HOTEL

RIVERWALK MELBOURNE

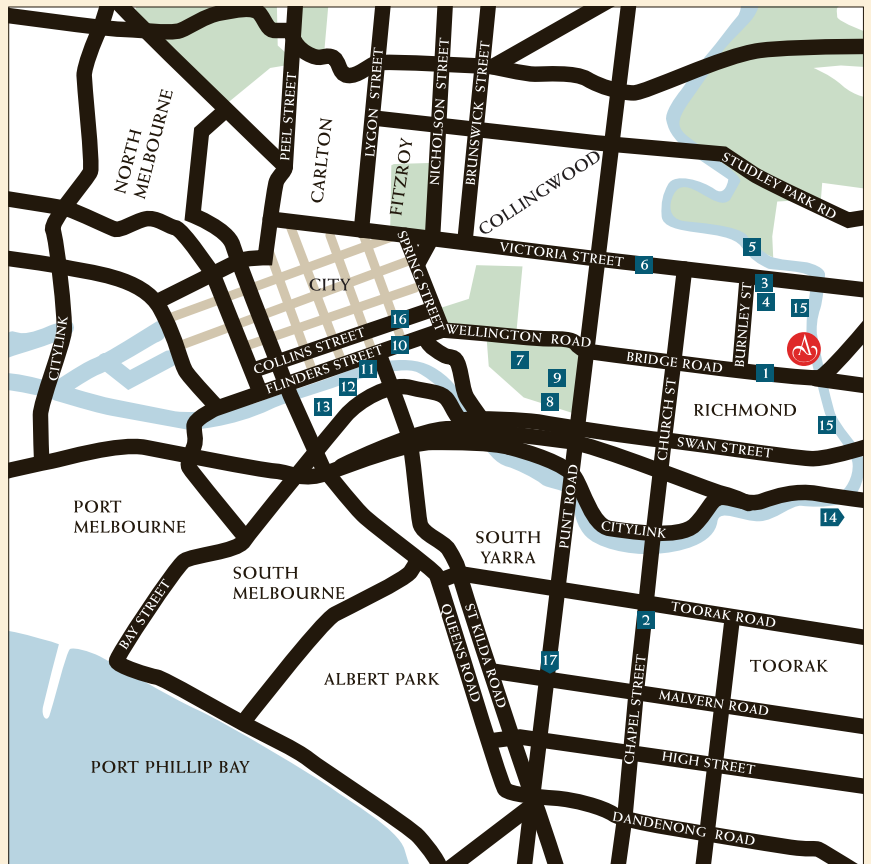


Room	Area	Ceiling	Theatre	Classroom	Dining	Cocktail	U Shape	Boardroom	Cabaret 6/table	Cabaret 7/table	
a	Bridge Room	112	2.7m	120	60	70	120	40	24	42	49
b	Yarra Room	85	2.7m	100	45	60	90	30	24	36	42
a+b	Bridge/Yarra Room	200	2.7m	220	100	150	250	n/a	n/a	84	98
c	Park Room	67.2	2.7m	50	20	40/50*	50	18	18	24	28
d	Banks Room	49.5	2.7m	45	24	40	40	18	18	24	28
e	Burwood Room	27.9	2.7m	20	12	20*	n/a	10**	9**	6	7
f	Lennox Room	27.9	2.7m	20	12	20*	n/a	10**	9**	6	7
g	Swan Room	29.9	2.7m	15	10	10	n/a	8**	9**	6	7
e+f	Burwood/Lennox Room	55.8	2.7m	48	24	40	50	18	15	18	21
f+g	Lennox/Swan Room	58.2	2.7m	48	24	40	50	18	15	18	21
e+f+g	Hawthorn Room	85	2.7m	90	36	60	80/100	30	30	42	49
h	Marquee	157.5	3m	200	84	120/140*	250	40	42	60	70
i	Fresco Octagon	67.2	2.7m	50	20	40/50*	50	18	18	24	28

\* = Only if no projection is required \*\* = Only if no presenter is required n/a = Not suitable for this room

## MELBOURNE

- 1 Bridge Road
- 2 Church Street / Chapel Street
- 3 Victoria Gardens Shopping Centre
- 4 Ikea (Largest Ikea store in the Southern Hemisphere)
- 5 Yarra River
- 6 Victoria Street Asian Restaurant Precinct
- 7 Melbourne Cricket Ground (MCG)
- 8 Melbourne Olympic Park
- 9 Punt Road Oval
- 10 Flinders Street
- 11 Flinders Street Station
- 12 Southbank Precinct
- 13 Crown Casino
- 14 To Chadstone Shopping Centre
- 15 Yarra Cycling / Jogging Trails
- 16 Collins Street
- 17 To St Kilda



649 BRIDGE ROAD, RICHMOND VIC 3121 AUSTRALIA

T +61 3 9246 1200 / 1800 339 436 F +61 3 9246 1200 E res@amora.melbourne

www.amorahotels.com